

Rgs / GATX type 936I

USAGE

This car of the type Rgs is used for the transportation of containers and swap bodies and has two 2-axle bogies. The flat cars are suitable for ISO 10', 30' and 45' long containers as well as swap bodies. With its moveable stanchions the Rgs car is as well suitable for transporting cement blocks, steel plates, tubes, vehicles and other long goods.

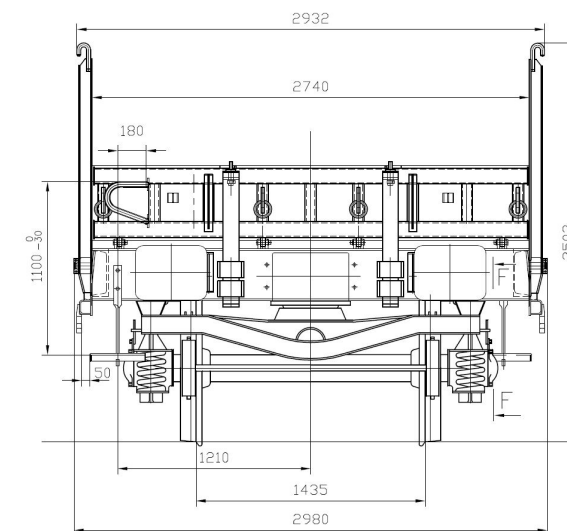
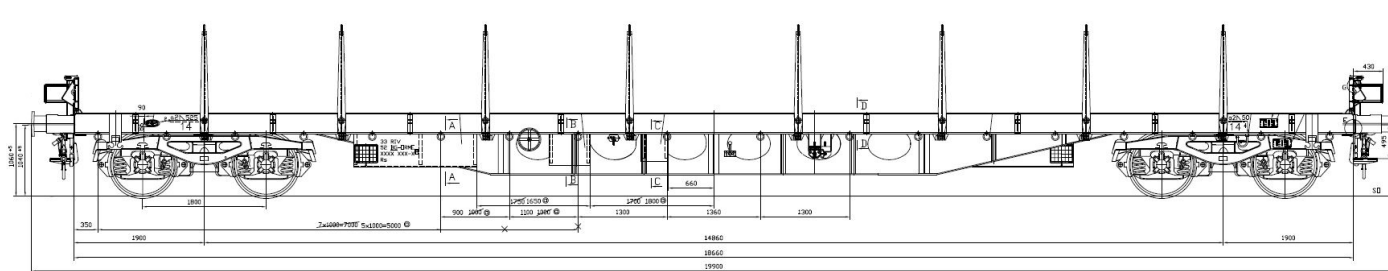
PAYLOAD TABLE

	A	B	C
S	42.5t	50.5t	58.5t
I20	0.0		

PRODUCT DETAILS

Tare weight	21.5 t
Loading weight	58.5 t
Total weight	80.0 t
Length over buffers	19,900 mm





TECHNICAL DATA

Distance between pivots	14,840 mm
Loading length	18,660 mm
Loading height	1,210 mm

MAX. LOAD DUE TO THE LOADING LENGTH

	m	t	
a-a	2	32	33
b-b	5	35	38
c-c	9	36	44
d-d	15	44	58
e-e	18	58	24