

# Sgns / GATX type 9440

## USAGE

This car of the type Smmps is used for the transportation of containers and swap bodies and has two 2-axle bogies. The flat cars are suitable for ISO 20' long containers as well as swap bodies (max. 2 pcs. / car each). Due to its low tare weight, the Smmps car is also suitable for heavy loads (including steel and components).

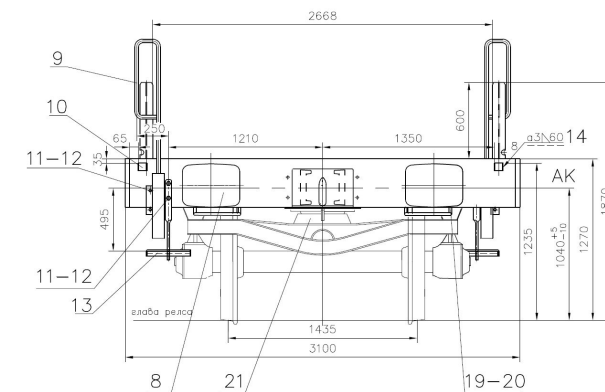
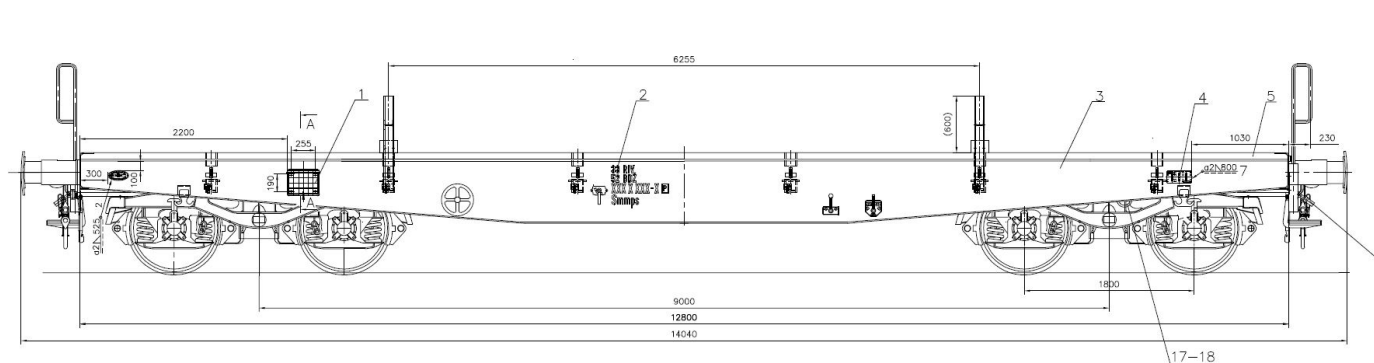
## PAYLOAD TABLE

|     | A      | B      | C      |
|-----|--------|--------|--------|
| S   | 45.5 t | 51.5 t | 61.5 t |
| I20 | 0.0    |        |        |

## PRODUCT DETAILS

|                     |           |
|---------------------|-----------|
| Tare weight         | 18.5 t    |
| Loading weight      | 61.5 t    |
| Total weight        | 80.0 t    |
| Length over buffers | 14,040 mm |





## TECHNICAL DATA

Distance between pivots

9,000 mm

Loading length

12,800 mm

Loading height

1,220 mm