

Uacns / GATX type 8099

USAGE

This modern 4-axle powder car is designed for the transportation of various dust goods, incl. approval for hazardous goods. Among other things, ashes, filter dust, lime slaked with a bulk density of 0.7 t/m³, wheat flour, artificial fertilizers or marble flour can be transported in addition to lignite dust.

PAYLOAD TABLE

	A	B	C	D
S	43.5 t	51.5 t	59.5 t	69.5 t
I20	0.0			

PRODUCT DETAILS

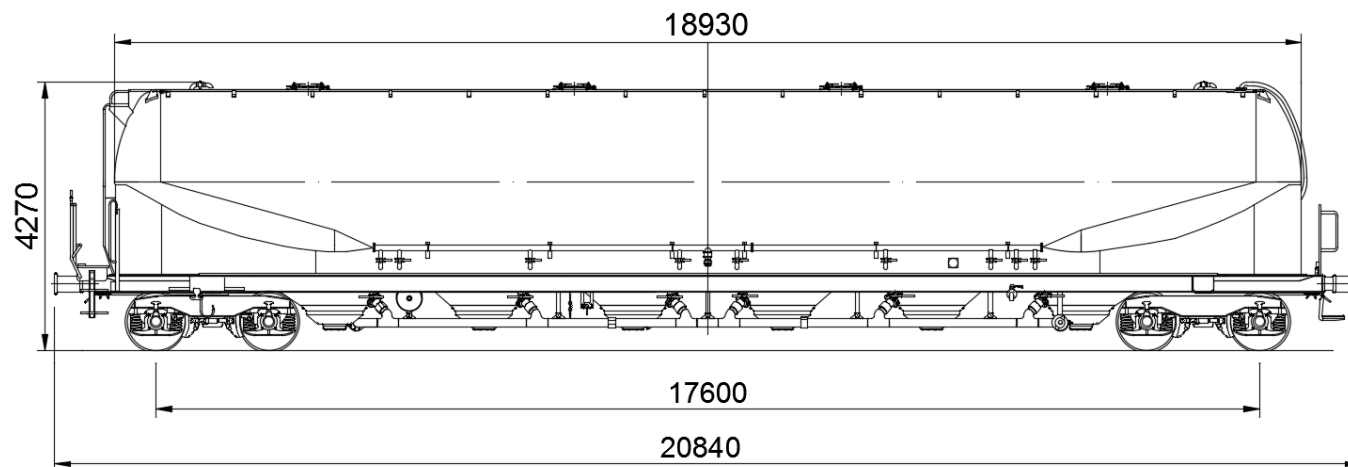
Capacity	128.0 m ³
Tare weight	20.5 t
Loading weight	69.5 t
Total weight	90.0 t
Length over buffers	20,840 mm
Distance between outer axles	17,600 mm



Scan the QR-code for more details:



#railcarleasingmadeeasier
www.gatx.eu



TANK DATA

Tank/Silo material	AW-5186
Working pressure	2.5 bar
Hoppers	6
Tank code	SGAN

LOADING/UNLOADING DEVICES

Loading domes	4
Fast sealing cover	DN 500
Filter cloth	yes
Collecting pipe	middle
Product connection	5 ¹ / ₂ " thread
Unloading system	pneumatic
Unloading height	440 mm

