

# Uacs / GATX type 8069

## USAGE

This 4-axle rail car is designed for the transportation of pulverized and fine-grain products, such as lime, cement, heavy soda or aluminum oxide.

## PAYLOAD TABLE

	A	B	C
S	40.0t	48.0t	56.0t
I20		0.0	

## PRODUCT DETAILS

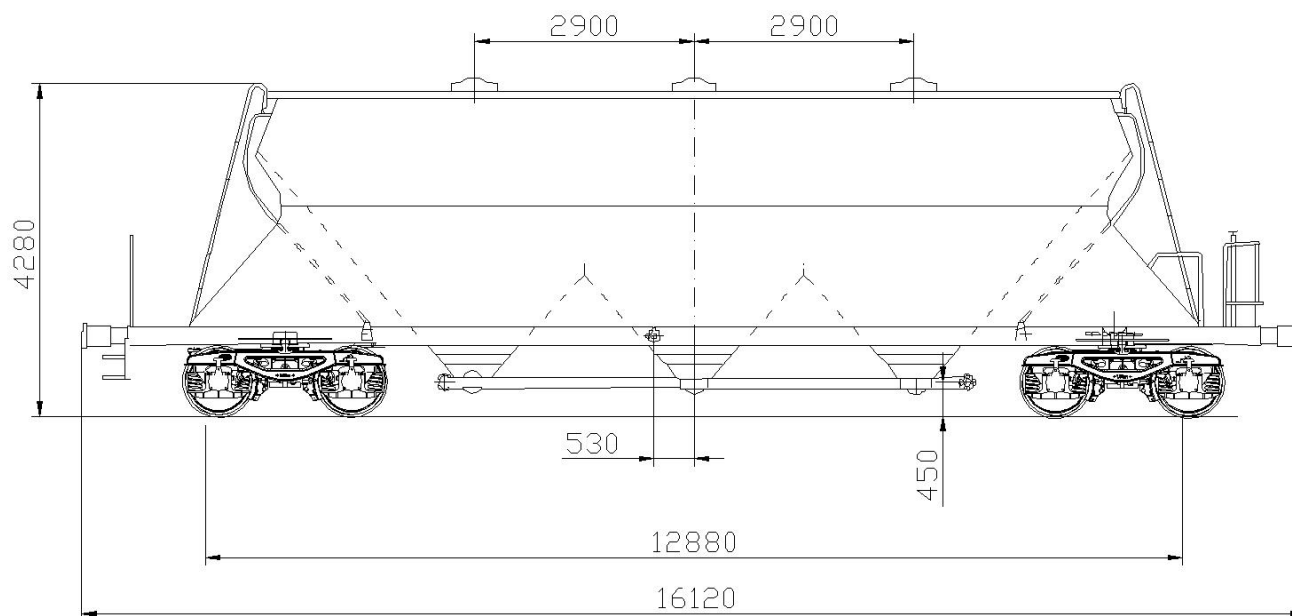
Capacity	69.0 m <sup>3</sup>
Tare weight	24.0 t
Loading weight	56.0 t
Total weight	80.0 t
Length over buffers	16,120 mm
Distance between outer axles	12,880 mm



Scan the QR-code for more details:



#railcarleasingmadeeasier  
www.gatx.eu



### TANK DATA

Tank/Silo material	St 52-3
Working pressure	2.5 bar
Hoppers	3

### LOADING/UNLOADING DEVICES

Loading domes	4
Fast sealing cover	DN 500
Filter cloth	yes
Collecting pipe	S-shaped
Product connection	5 <sup>1</sup> / <sub>2</sub> " thread
Unloading system	pneumatic
Unloading height	450 mm

