

Zacns, Zacs, Zaces / GATX type 5560

USAGE

This 4-axle stainless steel rail tank car is optimized for the transport of carbon disulphide (CS₂) and is characterized by its extensive safety equipment.

PAYLOAD TABLE

	A	BI	B2	C	D
S	43.5 t	49.8 t	51.5 t	61.5 t	69.5 t
I20			0.0		

PRODUCT DETAILS

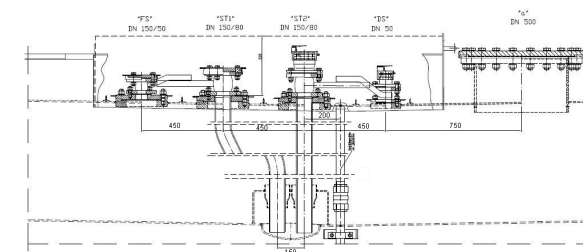
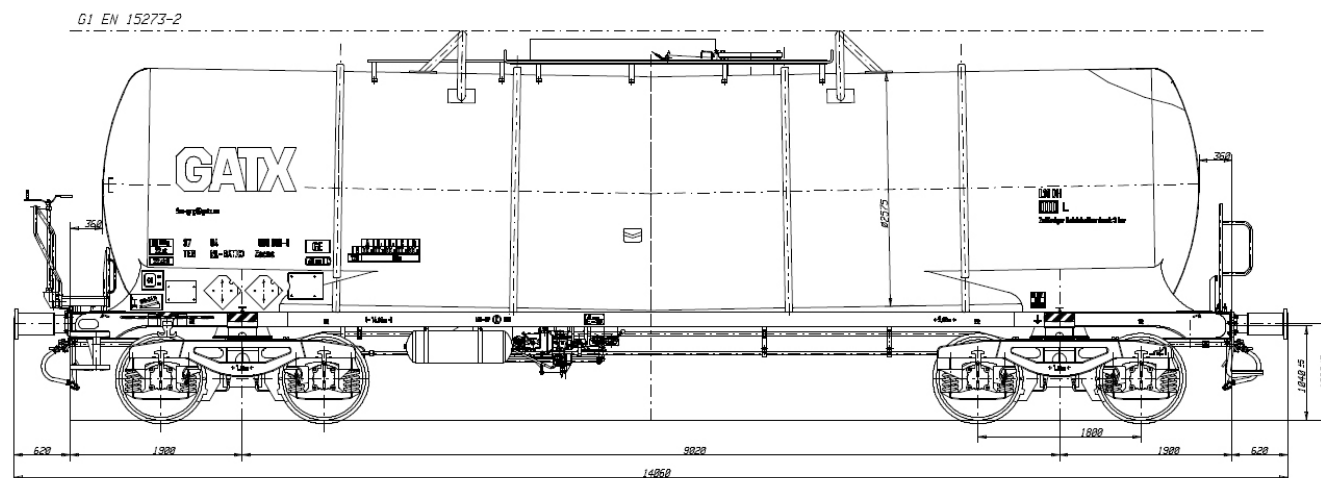
Capacity	60.0 m ³
Tare weight	20.5 t
Total weight	90.0 t
Length over buffers	14,060 mm



Scan the
QR-code for
more details:



#railcarleasingmadeeasier
www.gatx.eu



TANK DATA

Tank material	Stainless steel 1.4301
Tank code	LIODH
Heating/Insulation	No
Inner coating	No

REMARKS

The cars are equipped with the following nozzles:
 Filling nozzle DN150 with reduction to DN50 with ball valve DN 50 and blind cap DN 50
 Dip tube nozzle no. 1 DN 150 with reduction to DN 80 with ball valve DN 80 and blind cap DN 80
 Dip tube nozzle no. 2 DN 150 with reduction to DN 80 with ball valve DN 80 and dry coupling Manntek 3"
 Pressure nozzle DN 50 with ball valve DN 50 and dry coupling Manntek 2"

LOADING/UNLOADING DEVICES

Dome	DN 500
Top unloading device	Yes
Dry couplings	MannTek with blind caps
Floor operated vapour return	No
Forced ventilation valve	No
Residue discharging	1°
Side valve	No
Bottom valve	No

