

Sgns / GATX type 9460B

USAGE

This 4-axle freight car of the type Sgns is suitable for the transportation of 20', 30', 40' and 45' ISO containers and swap bodies.

PAYLOAD TABLE

	A	B	C	D
S	46.5t	54.5t	62.5t	72.5t
I20	0.0			

PRODUCT DETAILS

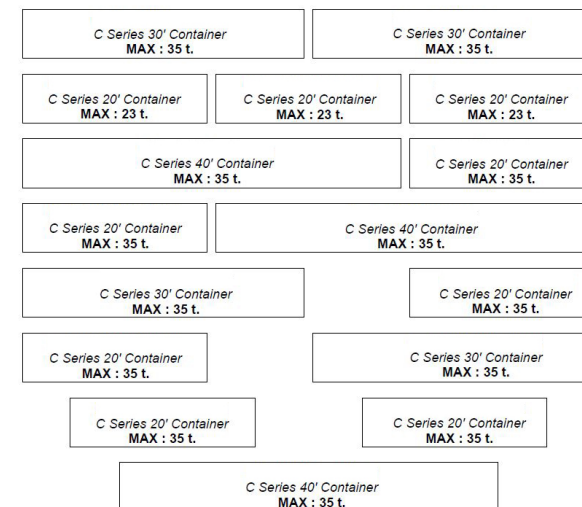
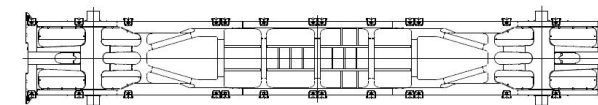
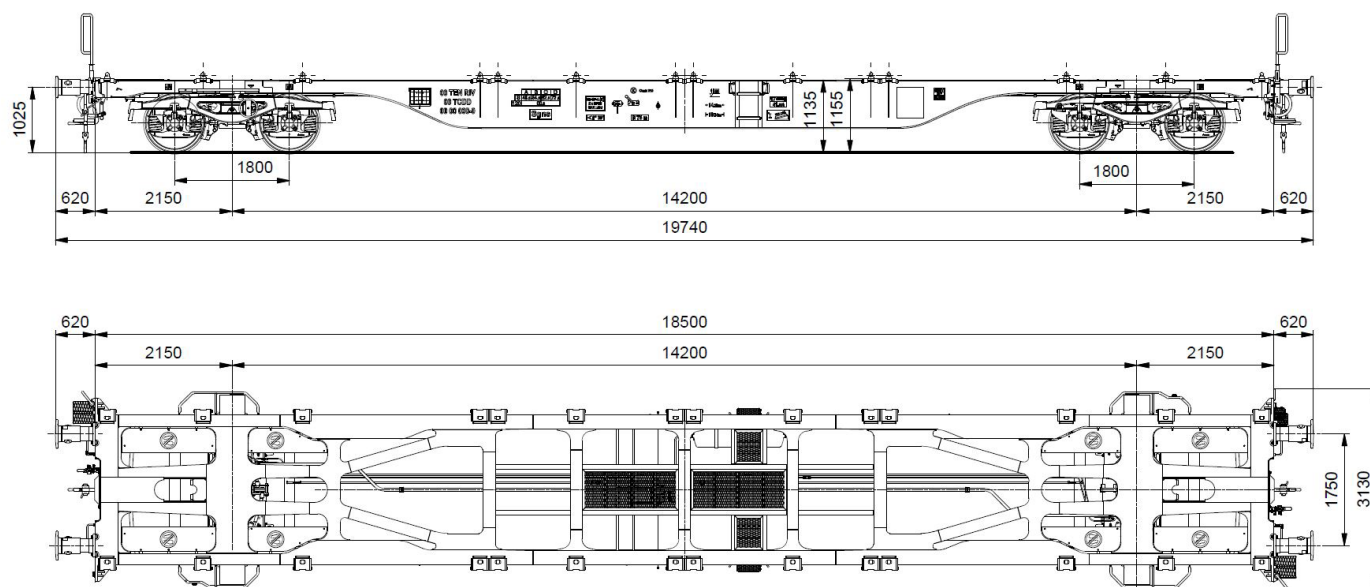
Tare weight	17.5 t
Loading weight	72.5 t
Total weight	90.0 t
Length over buffers	19,740 mm



Scan the
QR-code for
more details:



#railcarleasingmadeeasier
www.gatx.eu



TECHNICAL DATA

Distance between pivots	14,200 mm
Loading length	18,500 mm
Loading height	1,155 mm

